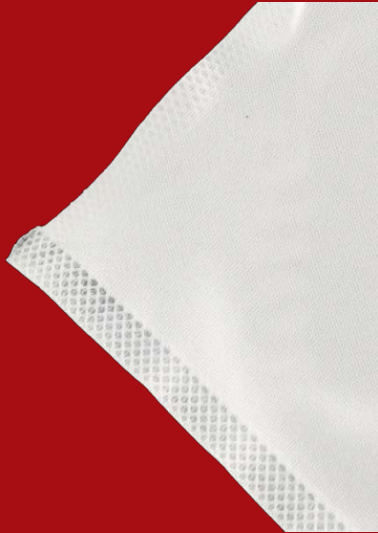




NanoTek
ISO 3-4 (Class 1-10)

Valutek Pre-Saturated Pressure-Heat Sealed Polyester Wiper



Valutek's pre-saturated pressure-heat sealed polyester wiper is crafted from 100% continuous filament polyester fabric, with a range of saturation levels of isopropyl alcohol and DI water.

This pre-saturated design enhances the wiper's absorbent capacity, effectiveness, and reduces airborne contamination when compared to traditional solvent bottle dispensers, sprays, and spills.

All Valutek pre-saturated wipers are mixed and cleanroom vacuum sealed under documented inspection and process control to meet Valutek quality standards and product specifications.

Part Number: VTPNWPSSI

Features

- 100% continuous filament double-knit polyester fiber.
- Pressure-heat sealed edges to minimize fiber contamination.
- Pre-saturated with consistent IPA/DI Water concentrations and saturation levels.
- Available in both reusable pail packaging and refill pack packaging options.
- The pre-saturated solution enhances both cleaning efficiency and cleaning protocol consistency.
- Extremely low levels of particles, fibers, ions, and extractables.

Application

As part of the **Valutek Nanotek product family**, this product is recommended for use in cleanroom **Class 1-10 (ISO 3-4)** critical environments.

This product is specifically designed for wet cleaning of critical surfaces in environments where strict control of flammable solvents and solvent concentrations is necessary. It offers various IPA blend levels that are well-suited for effectively removing different cleaning and disinfecting residues in regulated environments.

- All wipers are packed in double poly bags, vacuum sealed, flat packed in carton boxes and with a carton liner.
- Critical environment compatible.
- All wipers are **lot traceable** with retention samples held in **Quality Control for 36 months** from manufacturing.



Gloves



Wipers



Apparel



Adhesive Mats



Cleaning & Maintenance



Documentation



Glove Liners



ESD



Valutek Pre-Saturated Pressure-Heat Sealed Polyester Wiper

Part Number: VTPNWPSSI

NanoTek
ISO 3-4 (Class I-10)

VTPNWPSSI Sizes, IPA Concentration Percentage and Packaging



Reusable Pail Package

Part Number	Size	IPA / DI H ₂ O (%)	Packaging
VTPNWPSSI0-99	9" x 9" 23 cm x 23 cm	10/90	150 ea/bag, 2 bags/case, 300 ea/case
VTPNWPSSI50-99	9" x 9" 23 cm x 23 cm	50/50	150 ea/bag, 2 bags/case, 300 ea/case
VTPNWPSSI70-99	9" x 9" 23 cm x 23 cm	70/30	150 ea/bag, 2 bags/case, 300 ea/case
VTPNWPSSI90-99	9" x 9" 23 cm x 23 cm	90/10	150 ea/bag, 2 bags/case, 300 ea/case
VTPNWPSSI100-99	9" x 9" 23 cm x 23 cm	100/0	150 ea/bag, 2 bags/case, 300 ea/case

Part Number	Size	IPA / DI H ₂ O (%)	Packaging
VTPNWPSSI0R-99	9" x 9" 23 cm x 23 cm	10/90	75 ea/bag, 2 bags/case, 4 packs/case/600 ea/case
VTPNWPSSI50R-99	9" x 9" 23 cm x 23 cm	50/50	75 ea/bag, 2 bags/case, 4 packs/case/600 ea/case
VTPNWPSSI70R-99	9" x 9" 23 cm x 23 cm	70/30	75 ea/bag, 2 bags/case, 4 packs/case/600 ea/case
VTPNWPSSI90R-99	9" x 9" 23 cm x 23 cm	90/10	75 ea/bag, 2 bags/case, 4 packs/case/600 ea/case
VTPNWPSSI100R-99	9" x 9" 23 cm x 23 cm	100/0	75 ea/bag, 2 bags/case, 4 packs/case/600 ea/case



Refill Pack Package

VTPNWPSSI Technical Performance (In Dry State)

Attribute	Value	Units	Test Method
Basis Weight	135 ± 5	g/m ²	TAPPI T-410
Absorbency			
Sorptive Efficiency	2	mL/g	
Sorptive Capacity	310	mL/m ²	IEST-RP.CC004.3, Sec 8.1/Sec 8.2
Sorptive Rate	<1	second	
Particle Counts			
LPC: ≥0.5 µm	<7	10 ⁶ x particles/m ²	IEST-RP.CC004.3, Sec 6.1.3/Sec 6.2.1
Non Volatile Residue (NVR)			
DI Water Extractant	0.02	g/m ²	
IPA Extractant	0.1	g/m ²	IEST-RP.CC004.3, Sec 7.1.2
Extractable Counts (Ions)			
Sodium(Na ⁺)	<0.2 ppm	Fluoride(F)	<0.2 ppm
Potassium(K ⁺)	<0.2 ppm	Nitrite(NO ₂ ⁻)	<0.2 ppm
Calcium(Ca ²⁺)	<0.5 ppm	Bromide(Br ⁻)	<0.2 ppm
Magnesium(Mg ²⁺)	<0.2 ppm	Phosphate(PO ₄ ³⁻)	<0.3 ppm
Ammonium(NH ₄ ⁺)	<0.3 ppm	Chloride(Cl ⁻)	<0.2 ppm
Nitrate(NO ₃ ⁻)	<0.3 ppm	Sulfate(SO ₄ ²⁻)	<0.2 ppm

***Note:** Technical data listed reflects upper/lower limits. Certificates of Analysis available upon request for actual lot-to-lot test data. 36 month lot trend analysis available upon request



Valutek WEST
Phoenix, AZ - USA

Valutek EAST
Albany, NY - USA

Valutek ASIA
Penang - Malaysia

1.800.763.1250

orderdesk@valutek.com

valutek.com

INNOVATIVE SOLUTIONS FOR CRITICAL ENVIRONMENTS